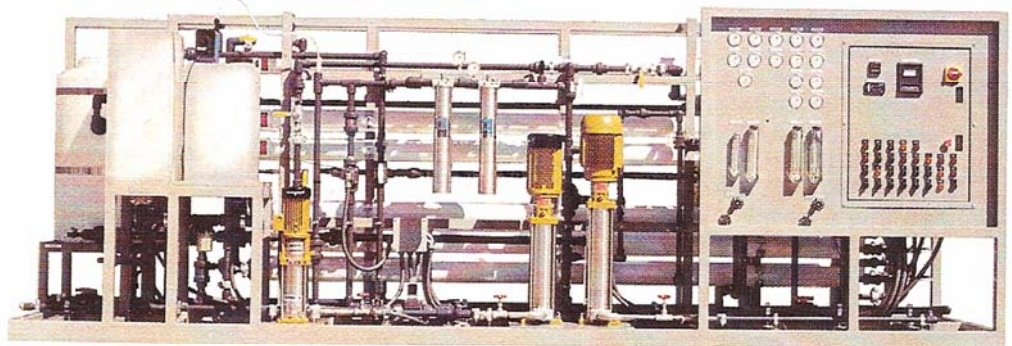


DELTA Series Double-Pass Reverse Osmosis Systems 2 to 100 Gallons Per Minute



MODEL DELTA-10DP
14,400 GPD of High-Purity Water



MODEL DELTA-40DP
57,600 GPD of High-Purity Water

US Engineered Products Inc.
300 Old Reading Pike
Stowe, PA 19464

Products and Services for the Water Treatment Industry

Phone: 610-327-1965 Fax: 610-906-1520 Email: usengineeredpro@comcast.net

US Engineered Products Inc.
300 Old Reading Pike
Stowe, PA 19464

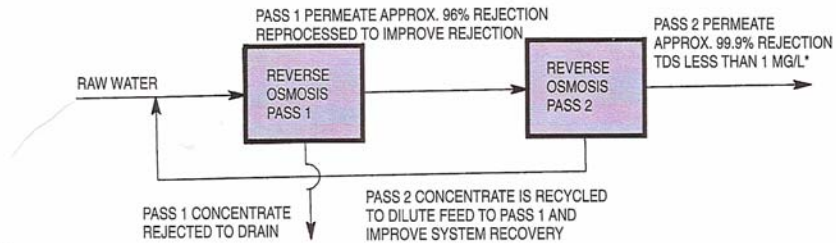
DELTA SERIES DOUBLE-PASS REVERSE OSMOSIS SYSTEMS
2 to 100 GALLONS PER MINUTE

STANDARD FEATURES

- Thin Film, Spiral-Wound, Brackish Water Membranes
- 316SS Valves and Pumps
- Fiberglass Pressure Vessels
- Low Pressure Switch
- High Pressure Switch
- Complete Control Panel
- Recycle of Pass 2 Concentrate
- Sediment Prefilter
- Intermediate Buffer Tank
- Resistivity Monitor or Conductivity Monitor (Pass 2)
- Flowmeters

OPTIONAL FEATURES

- Automatic Fast Flush (Pass 1 only)
- Single Pump Configuration without Staging Tank
- Chemical Dosing
- 50 Hz Motor
- PLC Control
- pH Monitor/Controller
- Concentrate Recycle Valve (Pass 1 only)



SYSTEM SPECIFICATIONS:

Model	Production*		3rd Year Operating Pressure		Inlet Size	Number of Elements	Element Diameter & Size	Designed Recovery	MOTOR SPECIFICATIONS:			
	GPD	LPD	Pass 1	Pass 2					60Hz/230/460V Phase	HP	50Hz/220/380/415V Phase	HP
DELTA-2DP	2,880	11.5	199	192	1.5"	7	4" x 40"	33%	1	4.5	1	3.2
DELTA-5DP	7,200	27.3	187	243	1.5"	14	4" x 40"	47%	3	10	3	8
DELTA-10DP	14,400	54.5	161	215	1.5"	27	4" x 40"	60%	3	10	3	9.5
DELTA-15DP	21,600	81.8	181	257	1.5"	36	4" x 40"	60%	3	15	3	17.5
DELTA-20DP	28,800	110	198	246	2"	48	4" x 40"	60%	3	17.5	3	17.5
DELTA-30DP	43,200	165	221	225	2"	80	4" x 40"	60%	3	25	3	25
DELTA-40DP	57,600	218	175	209	2"	22	8" x 40"	75%	3	25	3	30
DELTA-50DP	72,000	274	193	223	2"	26	8" x 40"	75%	3	40	3	40
DELTA-60DP	86,400	326	187	198	2.5"	32	8" x 40"	75%	3	35	3	35
DELTA-70DP	100,800	382	382	170	2.5"	38	8" x 40"	75%	3	35	3	35
DELTA-80DP	115,200	437	176	205	2.5"	44	8" x 40"	75%	3	40	3	45
DELTA-100DP	144,000	545	203	228	3"	48	8" x 40"	75%	3	65	3	65

*Based on feed water with TDS of 1,000 ppm and temperature of 25°C (77°F).

WEIGHTS & DIMENSIONS: (Optional features may increase dimensions)

Model	Approximate Shipping Dimensions				Approximate System Dimensions			
	Length (in/cm)	Width (in/cm)	Height (in/cm)	Weight (lbs/kg)	Length (in/cm)	Width (in/cm)	Height (in/cm)	Weight (lbs/kg)
DELTA-2DP	70/178	45/115	70/178	375/170	60/150	36/90	60/153	325/150
DELTA-5DP	180/460	60/150	78/200	2300/1050	169/430	48/122	66/168	1950/900
DELTA-10DP	180/460	60/150	78/200	2800/1300	169/430	48/122	66/168	2450/1100
DELTA-15DP	180/460	60/150	72/180	3250/1500	169/430	48/122	60/153	2850/1300
DELTA-20DP	232/600	60/150	72/180	4000/1800	216/550	48/122	60/153	3600/1625
DELTA-30DP	232/600	78/200	72/180	5250/2400	216/550	66/170	60/153	4800/2200
DELTA-40DP	270/685	88/225	76/195	5700/2600	256/650	77/196	64/160	5200/2350
DELTA-50DP	270/685	90/230	88/225	6500/3000	256/650	79/200	76/195	6000/2700
DELTA-60DP	270/685	90/230	88/225	7650/3500	256/650	79/200	76/195	7100/3200
DELTA-70DP	270/685	90/230	96/244	8800/4000	256/650	79/200	84/210	8200/3700
DELTA-80DP	300/760	90/230	98/250	10200/4600	288/730	79/200	86/220	9500/4300
DELTA-100DP	375/950	90/230	88/225	12000/5500	360/920	79/200	76/195	11000/5000